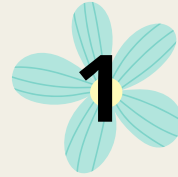
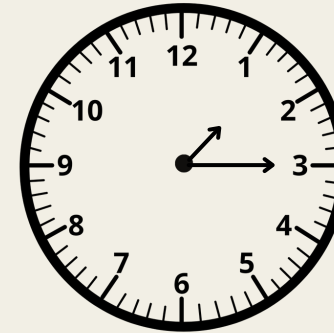


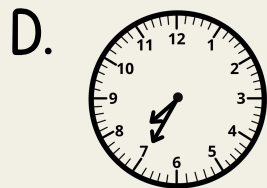
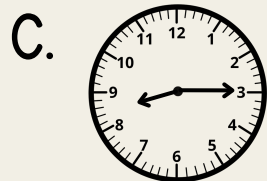
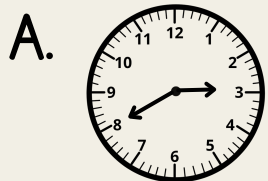
# Time Task Cards



Which is closest to the time shown on this clock?



Which clock below shows the time 8:35?



How many minutes are in 4 hours?



Which is closest to the time shown on this clock?



- A. 4:50
- B. 5:50
- C. 10:25
- D. 5:10



Chase began his homework at the time shown on the clock below.



He finished his homework 2 hours later. At what time did Chase finish his homework?



Anna went to work for 5 hours. How many minutes are equivalent to 5 hours?

- A. 300
- B. 500
- C. 5
- D. 30



When Mario got home from school, he watched TV for 45 minutes. Mario started watching TV at 3:30. What time did he finish watching TV?

- A. 4:45
- B. 3:45
- C. 2:45
- D. 4:15



Which is closest to the time shown on this clock?



The school day is 7 hours and 30 minutes long, if school starts at 7:25am, what time does school end?

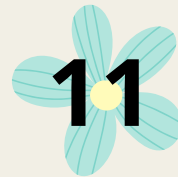
- A. 7:55am
- B. 7:55pm
- C. 2:55pm
- D. 2:30pm



Which is closest to the time shown on this clock?



- A. 2:40
- B. 8:10
- C. 8:05
- D. 1:40



Skye went to her friend's house at 4:45. She left at 6:10. How long was Skye at her friend's house?

- A. 1 hour 25 minutes
- B. 2 hours
- C. 1 hour 30 minutes
- D. 1 hour 15 minutes



Which is closest to the time shown on this clock?



- A. 6:10
- B. 3:30
- C. 2:30
- D. 6:20



Joe did yard work for 3 hours. How many minutes are equivalent to 3 hours?

- A. 180
- B. 300
- C. 90
- D. 18



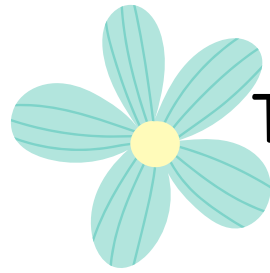
Ms. Smith's class began Math at the time shown on the clock below.



The class finished Math 1 hour and 25 minutes later. What time did they finish Math?



Jane went to Chick-fil-A for dinner at 6:00PM. She left Chick-fil-A at 6:32PM. How long was Jane at Chick-fil-A?



# Time Task Cards Answer Sheet

<b>1</b>	<b>2</b>	<b>3</b>	<b>4</b>	<b>5</b>
<b>6</b>	<b>7</b>	<b>8</b>	<b>9</b>	<b>10</b>
<b>11</b>	<b>12</b>	<b>13</b>	<b>14</b>	<b>15</b>